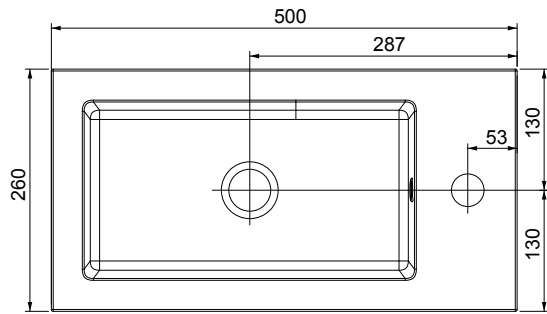
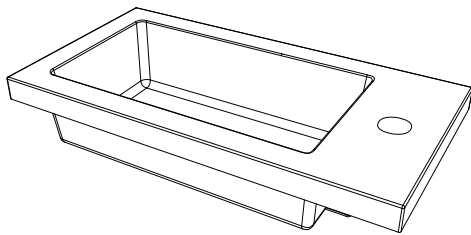
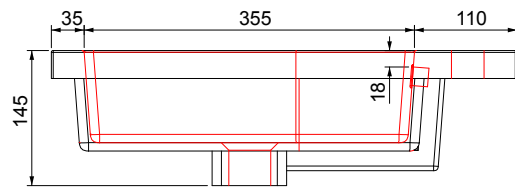
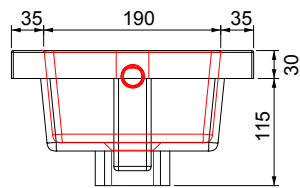
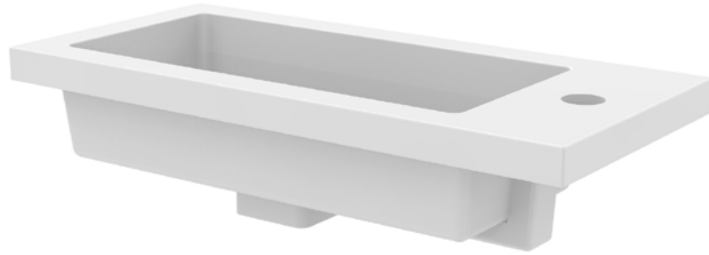


DART 500 SLIMLINE BASIN



Product	DART 500 SLIMLINE CAST BASIN
Basin Size	500w x 260d x 30h
Basin Code	373565

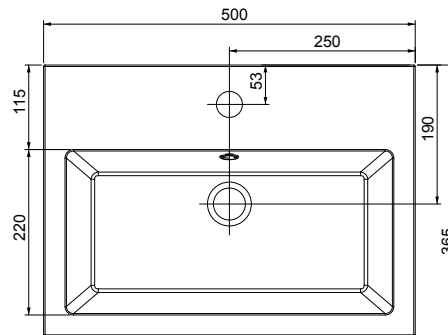
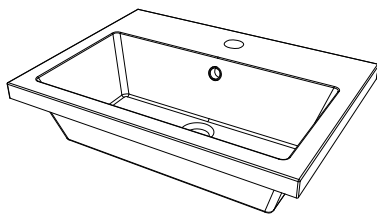
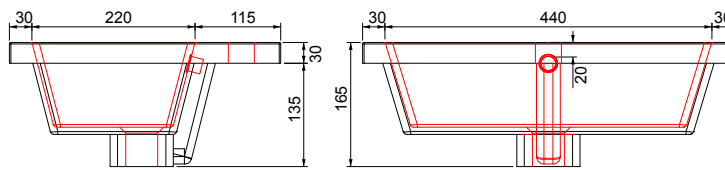
- Cast Basin.
- Integrated overflow requires slotted waste.
- This basin is designed to sit directly onto a 500mm slimline basin unit and the worktops about the sides..

CAST BASINS

The core ingredient of our Cast Marble basins is Dolomite Marble which is formed through volcanic action. The rock is milled and purified before being mixed with polymer resin formed into the required shape and then coated with a resin and quartz mixed gel coat to save its pigment and smooth finish.

The result is an extremely durable and easy to maintain product coupled with the benefit of constant sizing and smooth finishing that cannot be matched by traditional ceramics. Scratches are also repairable making this a more forgiving option. Cast basins have a sharp and ultra modern structured appeal to them.

DART 500 BASIN



Product **DART 500 CAST BASIN**

Basin Size **500w x 385d x 30h**

Basin Code **373564**

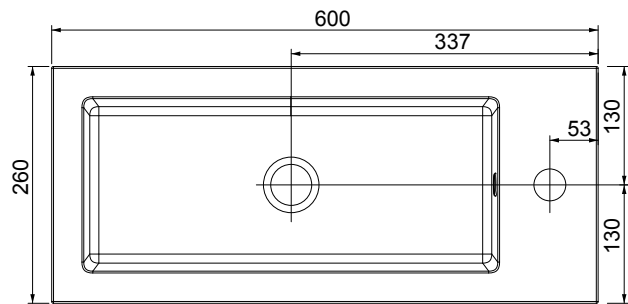
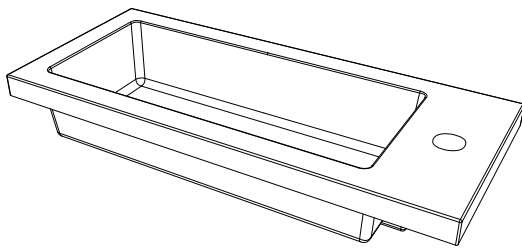
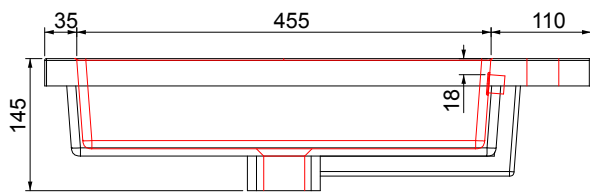
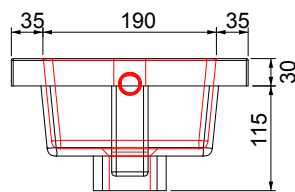
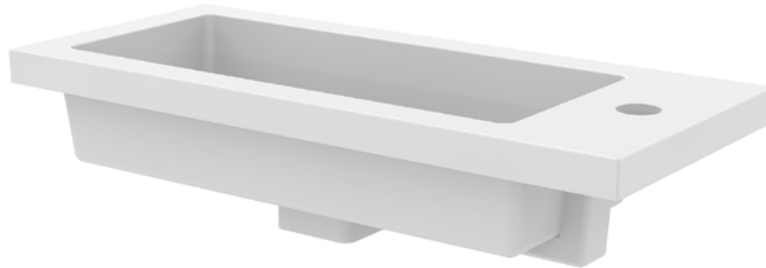
- *Cast Basin.*
- *Integrated overflow requires slotted waste.*
- *This basin is designed to sit directly onto a 500mm basin unit and the worktops about the sides..*

CAST BASINS

The core ingredient of our Cast Marble basins is Dolomite Marble which is formed through volcanic action. The rock is milled and purified before being mixed with polymer resin formed into the required shape and then coated with a resin and quartz mixed gel coat to save its pigment and smooth finish.

The result is an extremely durable and easy to maintain product coupled with the benefit of constant sizing and smooth finishing that cannot be matched by traditional ceramics. Scratches are also repairable making this a more forgiving option. Cast basins have a sharp and ultra modern structured appeal to them.

DART 600 SLIMLINE BASIN



Product	DART 600 SLIMLINE CAST BASIN
Basin Size	600w x 260d x 30h
Basin Code	373567

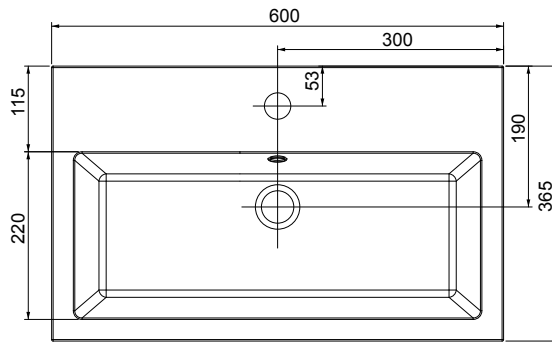
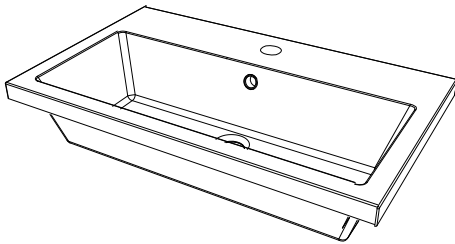
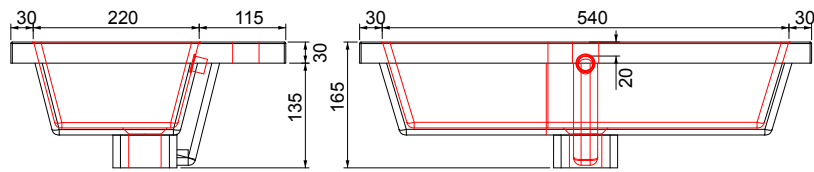
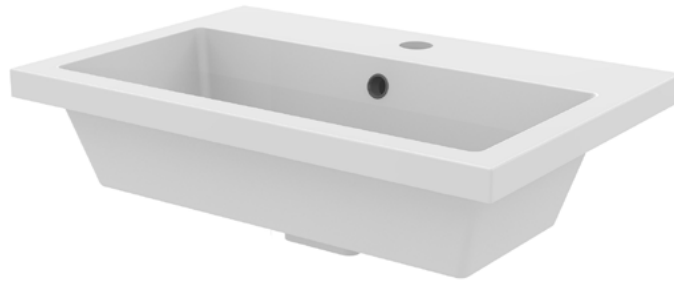
- Cast Basin.
- Integrated overflow requires slotted waste.
- This basin is designed to sit directly onto a 600mm slimline basin unit and the worktops about the sides..

CAST BASINS

The core ingredient of our Cast Marble basins is Dolomite Marble which is formed through volcanic action. The rock is milled and purified before being mixed with polymer resin formed into the required shape and then coated with a resin and quartz mixed gel coat to save its pigment and smooth finish.

The result is an extremely durable and easy to maintain product coupled with the benefit of constant sizing and smooth finishing that cannot be matched by traditional ceramics. Scratches are also repairable making this a more forgiving option. Cast basins have a sharp and ultra modern structured appeal to them.

DART 600 BASIN



Product **DART 600 CAST BASIN**

Basin Size **600w x 385d x 30h**

Basin Code **373566**

- *Cast Basin.*
- *Integrated overflow requires slotted waste.*
- *This basin is designed to sit directly onto a 600mm basin unit and the worktops about the sides..*

CAST BASINS

The core ingredient of our Cast Marble basins is Dolomite Marble which is formed through volcanic action. The rock is milled and purified before being mixed with polymer resin formed into the required shape and then coated with a resin and quartz mixed gel coat to save its pigment and smooth finish.

The result is an extremely durable and easy to maintain product coupled with the benefit of constant sizing and smooth finishing that cannot be matched by traditional ceramics. Scratches are also repairable making this a more forgiving option. Cast basins have a sharp and ultra modern structured appeal to them.